

Wild Flowers In East Dean And Environs



Table Of Contents

Document section		Page
Table of contents	This table	2
Introduction	Document raison d'être and dedication	3
Plant list	English common names and scientific names in Latin	4
Plant colours	Crude grouping of plants by approximate flower colour	7
Plant photographs	Macro photographs of plant flowers and Wikipedia links	10
Latin name index	Plant names in Latin, Dutch, English, French, German and Spanish	38
Conclusion		43

In electronic versions of this document (e.g. Adobe PDF) one can click the blue document section text on this page to navigate to the relevant page.

Elsewhere in this document blue text indicates Internet hyperlinks (predominantly to Wikipedia).

Wild Flowers In East Dean And Environs

Introduction

I am Devi Lal and a resident of East Dean. I am not a botanist nor even a gardener but I do appreciate the natural beauty of where I live. I have degrees in life sciences and computing. I speak several languages and I am also a keen photographer. This short document represents my photographic survey of the plethora of wild flowers that can be seen within a 3km radius of the village: during the summer of 2022 I simply went for a few walks with my camera. No special 're-wilded areas': just publicly accessible paths, roadside verges, downs and river banks.

Unfortunately, starting in the summer meant that I missed many of the spring flowers. There's always next year. I have included what could be called feral plants i.e. those that have escaped from gardens but are now to be found growing wild.

In order to identify plants I used two very handy websites which allow one to upload photographs for a near-instant assessment: <https://identify.plantnet.org> and <https://candide.com/GB/identify-plants>. I am sure that neither are perfect and sometimes present contradictory identifications. However, both are far better than I could do by myself. If you want to dispute an identification that is a discussion for which you will have to go elsewhere: I will not be interested!

While I took my photographs overwhelmingly in East Sussex, by and large the same plants are to be found all over England and indeed Northern Europe.

Having once obtained an identification, I then used the Latin name to search Wikipedia, <https://www.wikipedia.org>, for more information and to try to obtain common names in several different languages including Dutch, English, French, German and Spanish for the plants. I don't have all names for all plants.

I tend to prefer Latin names as identifiers. Common names are often too sloppily used, are different in other countries and sometimes the same common name is applied to several different unrelated species of plant. The name 'Hogweed' is one example. Sometimes there is no common name – in which case I have had no option but to use at least the genus part of the Latin. Many plants are supposedly edible or said to have medicinal uses. Personally I prefer my food to come from a supermarket and medicines from a pharmacy. However, the website "Plants for a future" (<https://pfaf.org>) gives a score from 0 [low] to 5 [high] for the edibility and medicinal attributes. Trust it and this document at your own risk! Not all plants in the photographs are represented in the PFAF website so the scores are replaced in this listing with question marks.

Warning: Deadly nightshade [*Atropa belladonna*] grows in East Sussex. This plant can kill you.

What has drawn me to the plants is photography so most of my images are 'macro' meaning they are at least lifesize, if not even bigger. This has the advantage of displaying the structure but the disadvantage of confusing large images of small flowers with small images of large ones. Oh well, so be it: it's better than nothing!

If you are reading an electronic version [e.g. Adobe PDF] of this document, all words in blue are hyperlinks [mainly to Wikipedia] whence further information can be found. Very often descriptions in languages other than English are available.



East Dean, 2021



Amsterdam, 1978

Dedication

This work is dedicated to the memory of my dear sister, Mira, who died suddenly and unexpectedly in July 2022.

Plant List

Note: The collection of plant photographs in the main part of the document are presented in order of the plant common name in English

English common name	Latin	Record
Adriatic Bellflower	<i>Campanula garganica</i>	1
Aegean Dock	<i>Rumex dentatus</i>	2
Apple	<i>Malus domestica</i>	3
Autumn Lady's Tresses	<i>Spiranthes spiralis</i>	4
Bee Orchid	<i>Ophrys apifera</i>	5
Birdsfoot Trefoil	<i>Lotus corniculatus</i>	6
Black Horehound	<i>Ballota nigra</i>	7
Bluebell	<i>Hyacinthoides nonscripta</i>	8
Bramble	<i>Rubus canescens</i>	9
Bristly Oxtongue	<i>Helminthotheca echioides</i>	10
Bristly Yarrow	<i>Achillea setacea</i>	11
Buckwheat	<i>Fagopyrum esculentum</i>	12
Butterfly Bush	<i>Buddleja davidii</i>	13
California Poppy	<i>Eschscholzia californica</i>	14
Cat's Ears	<i>Hypochaeris radicata</i>	15
Chicory	<i>Cichorium pumilum</i>	16
Coastal Plain Hawkweed	<i>Hieracium megacephalum</i>	17
Cocksfoot	<i>Dactylis glomerata</i>	18
Common Ragwort	<i>Jacobaea vulgaris</i>	19
Cow Clover	<i>Trifolium wormskioldii</i>	20
Cow Parsnip	<i>Heracleum lanatum</i>	21
Creeping Velvet Grass	<i>Holcus mollis</i>	22
Creeping Woodsorrel	<i>Oxalis corniculata</i>	23
Crested Hair Grass	<i>Koeleria macrantha</i>	24
Cretan Bryony	<i>Bryonia cretica</i>	25
Cyclamen	<i>Cyclamen hederifolium</i>	26
Daffodil	<i>Narcissus pseudonarcissus</i>	27
Daisy	<i>Bellis perennis</i>	28
Dandelion	<i>Taraxacum officinale</i>	29
Daucus	<i>Daucus muricatus</i>	30
Deadly Nightshade	<i>Atropa belladonna</i>	31
Devil's bit	<i>Succisa pratensis</i>	32
Dog Rose	<i>Rosa canina</i>	33
Edible Thistle	<i>Cirsium edule</i>	34
Elder	<i>Sambucus nigra</i>	35
Eschscholtz's Buttercup	<i>Ranunculus eschscholtzii</i>	36
Evening Primrose	<i>Oenothera glazioviana</i>	37
Everlasting Pea	<i>Lathyrus latifolius</i>	38
Field Marigold	<i>Calendula arvensis</i>	39
Field Mustard	<i>Sinapis arvensis</i>	40
Field Thistle	<i>Cirsium arvense</i>	41
Fleabane	<i>Pulicaria dysenterica</i>	42
Forget Me Not	<i>Myosotis arvensis</i>	43
Forget Me Not	<i>Myosotis welwitschii</i>	44
Foxglove	<i>Digitalis purpurea</i>	45
Giant Dead Nettle	<i>Lamium garganicum</i>	46
Goarse	<i>Ulex europaeus</i>	47
Goat Willow	<i>Salix caprea</i>	48
Grape Hyacinth	<i>Muscari commutatum</i>	49
Grave flower	<i>Silene latifolia</i>	50
Great Hairy Willow Herb	<i>Epilobium hirsutum</i>	51
Great Mullein	<i>Verbascum thapsus</i>	52
Green Alkanet	<i>Pentaglottis sempervirens</i>	53
Grey Field Speedwell	<i>Veronica polita</i>	54
Hedge Bindweed	<i>Calystegia sepium</i>	55
Hemp Agrimony	<i>Eupatorium cannabinum</i>	56
Herb Robert	<i>Geranium robertianum</i>	57

Hogweed	<i>Heracleum sphondylium</i>	58
Hogweed	<i>Heracleum austriacum</i>	59
Hollyhock	<i>Alcea rosea</i>	60
Holy Bramble	<i>Rubus ulmifolius sanctus</i>	61
Honesty	<i>Luminaria annua</i>	62
Honeysuckle	<i>Lonicera periclymenum</i>	63
Indian Nightshade	<i>Solanum violaceum</i>	64
Island False Bindweed	<i>Calystegia macrostegia</i>	65
Klasea Thistle	<i>Klasea lycopifolia</i>	66
Knapweed	<i>Centaurea polycantha</i>	67
Lady's Bedstraw	<i>Galium verum</i>	68
Large Yellow Loosestrife	<i>Lysimachia punctata</i>	69
Lazy daisy	<i>Aphanostephus ramosissimus</i>	70
Lesser Bindweed	<i>Convolvulus arvensis</i>	71
Lesser Knapweed	<i>Centaurea nigra</i>	72
Lords and Ladies	<i>Arum cylindraceum</i>	73
Love-in-a-mist	<i>Nigella damascena</i>	74
Mallow	<i>Malva sylvestris</i>	75
Mallow Of Nice	<i>Malva nicaeensis</i>	76
Meadow Barley	<i>Hordeum secalinum</i>	77
Meadow Buttercup	<i>Ranunculus acris</i>	78
Michaelmaes Daisy	<i>Aster amellus</i>	79
Milk Thistle	<i>Sonchus oleraceus</i>	80
Montpellier Cistus	<i>Cistus montspeliensis</i>	81
Mountain Ash	<i>Sorbus americana</i>	82
Musk Thistle	<i>Carduus nutans</i>	83
Narrow Leaved Valerian	<i>Centranthus lecoqii</i>	84
Nippelwort	<i>Lapsana communis</i>	85
Old Man's Beard	<i>Clematis vitalba</i>	86
Oregano	<i>Origanum vulgare</i>	87
Ox-eye Daisy	<i>Leucanthemum vulgare</i>	88
Peach	<i>Prunus persica</i>	89
Pennsylvania Blackberry	<i>Rubus pensilvanicus</i>	90
Periwinkle	<i>Vinca major</i>	91
Pincushion Flower	<i>Scabiosa canescens</i>	92
Plains Lazy Daisy	<i>Aphanostephus ramosissimus</i>	93
Prickly Sowthistle	<i>Sonchus asper</i>	94
Primrose	<i>Primula vulgaris</i>	95
Proso Millet	<i>Panicum miliaceum</i>	96
Purple Dead-nettle	<i>Lamium purpureum</i>	97
Purple Loosestrife	<i>Lythrum salicaria</i>	98
Purple Toadflax	<i>Linaria purpurea</i>	99
Pyramidal Orchid	<i>Anacamptis pyramidalis</i>	100
Rape	<i>Brassica napus</i>	101
Red Poppy	<i>Papaver rhoeas</i>	102
Red Valerian	<i>Centranthus ruber</i>	103
Reed	<i>Phragmites australis</i>	104
Restharrow	<i>Ononis repens</i>	105
Ribwort Plantain	<i>Plantago lanceolata</i>	106
Roadside Agrimony	<i>Agrimonia striata</i>	107
Roundhead Prairie Clover	<i>Dalea multiflora</i>	108
Round-headed Water Dropwort	<i>Oenanthe globulosa</i>	109
Rowan	<i>Sorbus aucuparia</i>	110
Scabious	<i>Scabiosa canescens</i>	111
Scrambled Eggs	<i>Corydalis aurea</i>	112
Sea Kale	<i>Crambe maritima</i>	113
Sea Lavender	<i>Limonium ramosissimum</i>	114
Seaside Agoseris	<i>Agoseris aspargioides</i>	115
Self-heal	<i>Prunella vulgaris</i>	116
Silver Ragwort	<i>Jacobaea maritima</i>	117
Sloe	<i>Prunus spinosa</i>	118
Spanish Broom	<i>Spartium junceum</i>	119
Spear Thistle	<i>Cirsium vulgare</i>	120
Sunflower	<i>Helianthus annuus</i>	121
Syrian Anemone	<i>Anemone coronaria</i>	122

Tall Fleabane	<i>Erigeron sumatrensis</i>	123
Teasel	<i>Dipsacus fullonum</i>	124
Twiggy Turnip	<i>Brassica fruticulosa</i>	125
Tyrol Knapweed	<i>Centaurea nigrescens</i>	126
Viper's Bugloss	<i>Echium vulgare</i>	127
Wall Rocket	<i>Diplotaxis hara</i>	128
Water Forget Me Not	<i>Myosotis scorpioides</i>	129
Water Knotweed	<i>Persicaria amphibia</i>	130
Water Ragwort	<i>Jacobaea aquatica</i>	131
White Clover	<i>Trifolium repens</i>	132
White Valerian	<i>Centranthus ruber albus</i>	133
Wild Carrot	<i>Daucus carota</i>	134
Willowherb	<i>Epilobium augustifolium</i>	135
Windflower	<i>Anemone multifida rubra</i>	136
Wood Anemone	<i>Anemoides nemorosa</i>	137
Woolly Ragwort	<i>Packera tomentosa</i>	138
Yellow Toadflax	<i>Linaria vulgaris</i>	139

Plant Colours

Colour can be a good first step in identifying what a given flower is. after all, anybody can tell the difference between a bluebell and a primrose. Nonetheless, to my untutored eye there seem to be huge numbers of say, yellow ones all looking confusingly similar. Much the same can be said of small mauve ones. Or white ones. Some plants have flowers of different colours or (irritatingly) change colour. Oh well, listing them in very basic colour groups helps perhaps. Note: The collection of plant photographs in the main part of the document are presented in order of the plant common name in English

English common name

Latin

Blue; Bleu; Blauw; Blau; Azul

Bluebell	<i>Hyacinthoides nonscripta</i>
Chicory	<i>Cichorium pumilum</i>
Forget Me Not	<i>Myosotis welwitschii</i>
Forget Me Not	<i>Myosotis arvensis</i>
Grape Hyacinth	<i>Muscari commutatum</i>
Green Alkanet	<i>Pentaglottis sempervirens</i>
Grey Field Speedwell	<i>Veronica polita</i>
Love-in-a-mist	<i>Nigella damascena</i>
Viper's Bugloss	<i>Echium vulgare</i>
Water Forget Me Not	<i>Myosotis scorpioides</i>

Brown; Brun; Bruin; Braun; Marrón

Deadly Nightshade	<i>Atropa belladonna</i>
-------------------	--------------------------

Green; Verte; Groen; Grün; Verde

Cocksfoot	<i>Dactylis glomerata</i>
Creeping Velvet Grass	<i>Holcus mollis</i>
Crested Hair Grass	<i>Koeleria macrantha</i>
Meadow Barley	<i>Hordeum secalinum</i>
Reed	<i>Phragmites australis</i>

Orange; Orange; Oranje; Orange; Anaranjado

California Poppy	<i>Eschscholzia californica</i>
Field Marigold	<i>Calendula arvensis</i>

Pink/Purple/Mauve; Rose/Violet; Roze/Purper; Rosa/Violett; Rosado/Morado

Adriatic Bellflower	<i>Campanula garganica</i>
Black Horehound	<i>Ballota nigra</i>
Buckwheat	<i>Fagopyrum esculentum</i>
Butterfly Bush	<i>Buddleja davidii</i>
Cow Clover	<i>Trifolium wormskioldii</i>
Cyclamen	<i>Cyclamen hederifolium</i>
Devil's bit	<i>Succisa pratensis</i>
Edible Thistle	<i>Cirsium edule</i>
Everlasting Pea	<i>Lathyrus latifolius</i>
Field Thistle	<i>Cirsium arvense</i>
Foxglove	<i>Digitalis purpurea</i>
Giant Dead Nettle	<i>Lamium garganicum</i>
Great Hairy Willow Herb	<i>Epilobium hirsutum</i>
Hemp Agrimony	<i>Eupatorium cannabinum</i>
Herb Robert	<i>Germanium robertianum</i>
Holy Bramble	<i>Rubus ulmifolius sanctus</i>
Honesty	<i>Luminaria annua</i>
Indian Nightshade	<i>Solanum violaceum</i>
Klasea Thistle	<i>Klasea lycopifolia</i>
Knapweed	<i>Centaurea polyantha</i>
Lesser Knapweed	<i>Centaurea nigra</i>
Mallow	<i>Malva sylvestris</i>

Mallow Of Nice	<i>Malva nicaeensis</i>
Michaelmaes Daisy	<i>Aster amellus</i>
Musk Thistle	<i>Carduus nutans</i>
Narrow Leaved Valerian	<i>Centranthus lecoqii</i>
Oregano	<i>Origanum vulgare</i>
Peach	<i>Prunus persica</i>
Periwinkle	<i>Vinca major</i>
Pincushion Flower	<i>Scabiosa canescens</i>
Purple Dead-nettle	<i>Lamium purpureum</i>
Purple Loosestrife	<i>Lythrum salicaria</i>
Purple Toadflax	<i>Linaria purpurea</i>
Pyramidal Orchid	<i>Anacamptis pyramidalis</i>
Red Valerian	<i>Centranthus ruber</i>
Restharrow	<i>Ononis repens</i>
Scabious	<i>Scabiosa canescens</i>
Sea Lavender	<i>Limonium ramosissimum</i>
Self-heal	<i>Prunella vulgaris</i>
Spear Thistle	<i>Cirsium vulgare</i>
Syrian Anemone	<i>Anemone coronaria</i>
Teasel	<i>Dipsacus fullonum</i>
Tyrol Knapweed	<i>Centaurea nigrescens</i>
Water Knotweed	<i>Persicaria amphibia</i>
Willowherb	<i>Epilobium augustifolium</i>

Red; Rouge; Rood; Rot; Rojo

Red Poppy	<i>Papaver rhoeas</i>
Windflower	<i>Anemone multifida rubra</i>

White; Blanc; Wit; Weiß; Blanco

Apple	<i>Malus domestica</i>
Autumn Lady's Tresses	<i>Spiranthes spiralis</i>
Bee Orchid	<i>Ophrys apifera</i>
Bramble	<i>Rubus canescens</i>
Bristly Yarrow	<i>Achillea setacea</i>
Cow Parsnip	<i>Heracleum lanatum</i>
Cretan Bryony	<i>Bryonia cretica</i>
Daucus	<i>Daucus muricatus</i>
Dog Rose	<i>Rosa canina</i>
Elder	<i>Sambucus nigra</i>
Grave flower	<i>Silene latifolia</i>
Hedge Bindweed	<i>Calystegia sepium</i>
Hogweed	<i>Heracleum sphondylium</i>
Hogweed	<i>Heracleum austriacum</i>
Hollyhock	<i>Alcea rosea</i>
Island False Bindweed	<i>Calystegia macrostegia</i>
Lazy daisy	<i>Aphanostephus ramosissimus</i>
Lesser Bindweed	<i>Convolvulus arvensis</i>
Lords and Ladies	<i>Arum cylindraceum</i>
Montpellier Cistus	<i>Cistus montspeliensis</i>
Mountain Ash	<i>Sorbus americana</i>
Ox-eye Daisy	<i>Leucanthemum vulgare</i>
Pennsylvania Blackberry	<i>Rubus pensilvanicus</i>
Plains Lazy Daisy	<i>Aphanostephus ramosissimus</i>
Proso Millet	<i>Panicum miliaceum</i>
Ribwort Plantain	<i>Plantago lanceolata</i>
Roundhead Prairie Clover	<i>Dalea multiflora</i>
Round-headed Water Dropwort	<i>Oenanthe globulosa</i>
Rowan	<i>Sorbus aucuparia</i>
Sea Kale	<i>Crambe maritima</i>
Sloe	<i>Prunus spinosa</i>
Tall Fleabane	<i>Erigeron sumatrensis</i>
White Clover	<i>Trifolium repens</i>
White Valerian	<i>Centranthus ruber albus</i>
Wild Carrot	<i>Daucus carota</i>
Wood Anemone	<i>Anemoides nemorosa</i>

Yellow; Jaune; Geel; Gelb; Amarillo

Aegean Dock	<i>Rumex dentatus</i>
Birdsfoot Trefoil	<i>Lotus corniculatus</i>
Bristly Oxtongue	<i>Helminthotheca echioides</i>
Cat's Ears	<i>Hypochaeris radicata</i>
Coastal Plain Hawkweed	<i>Hieracium megacephalum</i>
Common Ragwort	<i>Jacobaea vulgaris</i>
Creeping Woodsorrel	<i>Oxalis corniculata</i>
Daffodil	<i>Narcissus pseudonarcissus</i>
Daisy	<i>Bellis perennis</i>
Dandelion	<i>Taraxacum officinale</i>
Eschscholtz's Buttercup	<i>Ranunculus eschscholtzii</i>
Evening Primrose	<i>Oenothera glazioviana</i>
Field Mustard	<i>Sinapis arvensis</i>
Fleabane	<i>Pulicaria dysenterica</i>
Goarse	<i>Ulex europaeus</i>
Goat Willow	<i>Salix caprea</i>
Great Mullein	<i>Verbascum thapsus</i>
Honeysuckle	<i>Lonicera periclymenum</i>
Lady's Bedstraw	<i>Galium verum</i>
Large Yellow Loosestrife	<i>Lysimachia punctata</i>
Meadow Buttercup	<i>Ranunculus acris</i>
Milk Thistle	<i>Sonchus oleraceus</i>
Nippelwort	<i>Lapsana communis</i>
Old Man's Beard	<i>Clematis vitalba</i>
Prickly Sowthistle	<i>Sonchus asper</i>
Primrose	<i>Primula vulgaris</i>
Rape	<i>Brassica napus</i>
Roadside Agrimony	<i>Agrimonia striata</i>
Scrambled Eggs	<i>Corydalis aurea</i>
Seaside Agoseris	<i>Agoseris aspargioides</i>
Silver Ragwort	<i>Jacobaea maritima</i>
Spanish Broom	<i>Spartium junceum</i>
Sunflower	<i>Helianthus annuus</i>
Twiggy Turnip	<i>Brassica fruticulosa</i>
Wall Rocket	<i>Diploaxis hara</i>
Water Ragwort	<i>Jacobaea aquatica</i>
Woolly Ragwort	<i>Packera tomentosa</i>
Yellow Toadflax	<i>Linaria vulgaris</i>

Plant Photographs



1. Adriatic Bellflower (*Campanula garganica*)

FR= Campanule étoilée
NL= Campanula garganica

Edibility: 3; Medical use: 0



2. Aegean Dock (*Rumex dentatus*)

DE= Ampfer
FR= Oseille
NL= Zuring

Edibility: 1; Medical use: 1



3. Apple (*Malus domestica*)

DE= Apfel
ES= Manzano
FR= Pomme
NL= Appel

Edibility: 5; Medical use: 2



4. Autumn Lady's Tresses (*Spiranthes spiralis*)

DE= Herbst-Drehwurz
FR= Spiranthe d'automne
NL= Herfstschroeforchis

Edibility: ?; Medical use: 1



5. Bee Orchid (*Ophrys apifera*)

DE= Bienen-Ragwurz
ES= Abeja
FR= Ophrys abeille
NL= Bijenorchis

Edibility: 2; Medical use: 2





6. Birdsfoot Trefoil (*Lotus corniculatus*)

DE= Hornklee
ES= Loto corniculado
FR= Lotier corniculé
NL= Vlinderbloem

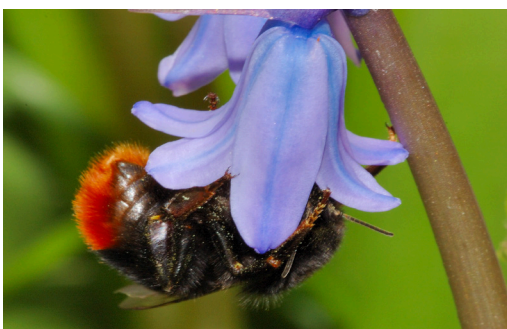
Edibility: 1; Medical use: 1



7. Black Horehound (*Ballota nigra*)

DE= Schwarznessel
ES= Marrubio fétido
FR= Ballote noire
NL= Echte ballote

Edibility: 0; Medical use: 3



8. Bluebell (*Hyacinthoides non-scripta*)

DE= Glockenblume
ES= Jacinto de los bosques
FR= Jacinthe des bois
NL= Klokje

Edibility: 0; Medical use: 1



9. Bramble (*Rubus canescens*)

DE= Filz-Brombeere
ES= Zarza
FR= Ronce tomenteuse
NL= Braam

Edibility: 2; Medical use: ?



10. Bristly Oxtongue (*Helminthotheca echioides*)

DE= Natternkopf-Wurmlattich
FR= Picride fausse vipérine
NL= Dubbelkelk

Edibility: 2; Medical use: 0





11. Bristly Yarrow (*Achillea setacea*)

DE= Schafgarben
ES= Perejil bravío
FR= Achillée
NL= Duizendblad

Edibility: ?; Medical use: ?



12. Buckwheat (*Fagopyrum esculentum*)

DE= Echter Buchweizen
ES= Alforjón
FR= Sarrasin
NL= Boekweit

Edibility: 4; Medical use: 3



13. Butterfly Bush (*Buddleja davidii*)

DE= Schmetterlingsflieder
ES= Arbusto de las mariposas
FR= Arbre aux papillons
NL= Vlinderstruik

Edibility: ?; Medical use: ?



14. California Poppy (*Eschscholzia californica*)

DE= Kalifornischer Mohn
ES= Amapola de California
FR= Pavot de Californie
NL= Slaapmutsje

Edibility: 1; Medical use: 3



15. Cat's Ears (*Hypochaeris radicata*)

DE= Gewöhnliches Ferkelkraut
ES= Hierba del chancho
FR= Porcelle enracinée
NL= Gewoon biggenkruid

Edibility: ?; Medical use: ?

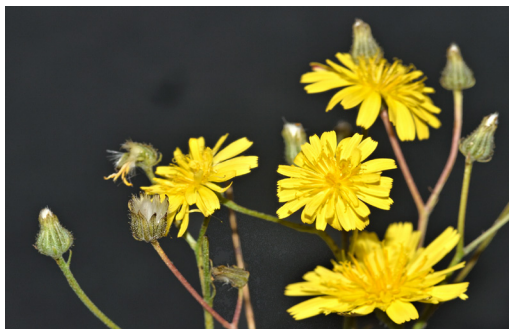




16. Chicory (*Cichorium pumilum*)

DE= Chicoree
ES= Achicoria
FR= Chicorée
NL= Cichorei

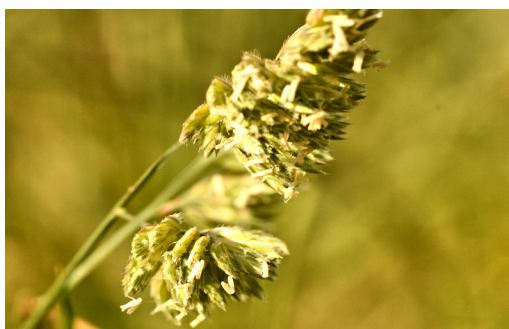
Edibility: 2; Medical use: 0



17. Coastal Plain Hawkweed (*Hieracium megacephalum*)

DE= Habichtskräuter
FR= Hieracium
NL= Havikskruid

Edibility: ?; Medical use: ?



18. Cocksfoot (*Dactylis glomerata*)

DE= Gewöhnliches Knäuelgras
ES= AVALICO
FR= Dactyle pelotonné
NL= Kropaar

Edibility: 0; Medical use: 1



19. Common Ragwort (*Jacobaea vulgaris*)

DE= Jakobs-Greiskraut
ES= Hierba de Santiago
FR= Sénéçon de Jacob
NL= Jakobskruiskruid

Edibility: ?; Medical use: ?

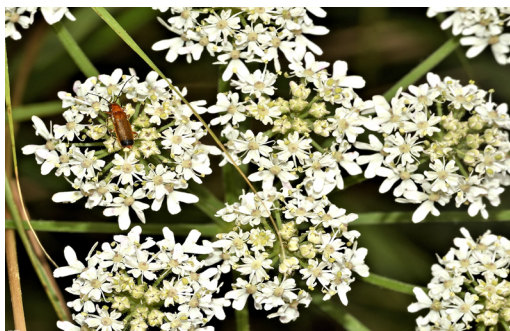


20. Cow Clover (*Trifolium wormskioldii*)

DE= Klee
FR= Trèfle
NL= Klaver

Edibility: ?; Medical use: ?





21. Cow Parsnip (*Heracleum lanatum*)

DE= Kuh Pastinaken
ES= Pastinaca de vaca
FR= Berce laineuse
NL= Koe pastinaak

Edibility: ?; Medical use: ?



22. Creeping Velvet Grass (*Holcus mollis*)

DE= Weiches Honiggras
FR= Houlque molle
NL= Gladde witbol

Edibility: 3; Medical use: 1



23. Creeping Woodsorrel (*Oxalis corniculata*)

DE= Horn-Sauerklee
ES= Acedera
FR= Oxalis corniculé
NL= Gehoornde klaverzuring

Edibility: 2; Medical use: 2



24. Crested Hair Grass (*Koeleria macrantha*)

DE= Zierliches Schillergras
FR= Koélerie grêle
NL= Smal fakkelgras

Edibility: 1; Medical use: 1



25. Cretan Bryony (*Bryonia cretica*)

Edibility: 0; Medical use: 2





26. Cyclamen (*Cyclamen hederifolium*)

DE= Efeublättriges Alpenveilchen
ES= Ciclamen
FR= Cyclamen de Naples
NL= Napolitaanse cycloam

Edibility: 0; Medical use: 1



27. Daffodil (*Narcissus pseudonarcissus*)

DE= Gelbe Narzisse
ES= Azucena silvestre
FR= Narcisse jaune
NL= Wilde narcis

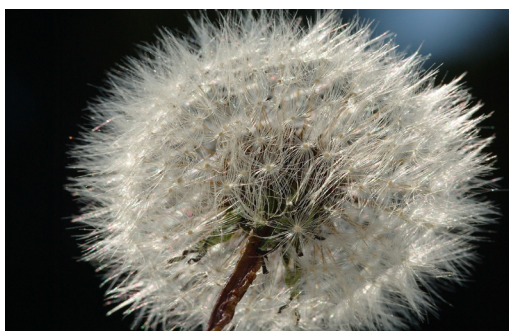
Edibility: 0; Medical use: 2



28. Daisy (*Bellis perennis*)

DE= Gänseblümchen
ES= Margarita
FR= Pâquerette
NL= Madeliefje

Edibility: 2; Medical use: 3



29. Dandelion (*Taraxacum officinale*)

DE= Löwenzahn
ES= Diente de león
FR= Dent-de-lion
NL= Paardenbloem

Edibility: 4; Medical use: 3



30. Daucus (*Daucus muricatus*)

Edibility: ?; Medical use: ?





31. Deadly Nightshade (*Atropa belladonna*)

DE= Schwarze Tollkirsche
ES= Belladonna
FR= Belladone
NL= Wolfskers

Edibility: 0; Medical use: 3



32. Devil's bit (*Succisa pratensis*)

DE= Teufelsabbiss
ES= Bocado del diablo
FR= Mors-du-Diable
NL= Blauwe knoop

Edibility: 2; Medical use: 2



33. Dog Rose (*Rosa canina*)

DE= Hundsröse
ES= Rosa canina
FR= Rosier des chiens
NL= Hondсроos

Edibility: 3; Medical use: 3



34. Edible Thistle (*Cirsium edule*)

DE= Essbare Distel
ES= Cardo comestible
FR= Chardon comestible
NL= Eetbare distel

Edibility: 3; Medical use: 0



35. Elder (*Sambucus nigra*)

DE= Schwarzer Holunder
ES= Saúco negro
FR= Sureau noir
NL= Gewone vlier

Edibility: 4; Medical use: 3





36. Eschscholtz's Buttercup (*Ranunculus eschscholtzii*)



Edibility: ?; Medical use: ?



37. Evening Primrose (*Oenothera glazioviana*)



DE= Rotkelchige Nachtkerze
FR= Onagre de Glaziou
NL= Grote teunisbloem

Edibility: 2; Medical use: 2



38. Everlasting Pea (*Lathyrus latifolius*)



DE= Breitblättrige Platterbse
ES= Albejana basta
FR= Pois vivace
NL= Brede lathyrus

Edibility: 1; Medical use: 0



39. Field Marigold (*Calendula arvensis*)



DE= Acker-Ringelblume
ES= Caléndula de los campos
FR= Souci des champs
NL= Akkergoudsbloem

Edibility: 2; Medical use: 3



40. Field Mustard (*Sinapis arvensis*)



DE= Acker-Senf
ES= Mostaza de campo
FR= Moutarde des champs
NL= Herik

Edibility: 2; Medical use: 1



41. Field Thistle (*Cirsium arvense*)

DE= Acker-Kratzdistel
ES= Cardo cundidor
FR= Chardon des champs
NL= Akkerdistel

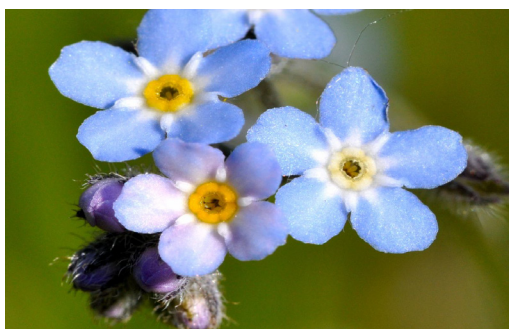
Edibility: 2; Medical use: 2



42. Fleabane (*Pulicaria dysenterica*)

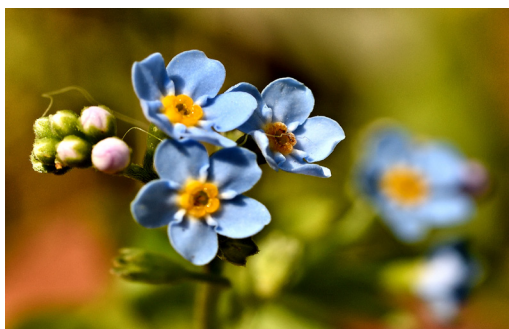
DE= Großes Flohkraut
ES= Hierba de gato
FR= Pulicaire dysentérique
NL= Heelblaadjes

Edibility: 0; Medical use: 1



43. Forget Me Not (*Myosotis arvensis*)

Edibility: ?; Medical use: ?



44. Forget Me Not (*Myosotis welwitschii*)

DE= Acker-Vergissmeinnicht
FR= Myosotis des champs
NL= Akkervergeet-mij-nietje

Edibility: ?; Medical use: ?



45. Foxglove (*Digitalis purpurea*)

DE= Fingerhüte
ES= Dedaleras
FR= Digitale
NL= Vingerhoedskruid

Edibility: 0; Medical use: 4





46. Giant Dead Nettle (*Lamium garganicum*)

DE= Taube Nessel
FR= Lamier pourpre

Edibility: ?; Medical use: ?



47. Goarse (*Ulex europaeus*)

DE= Stechginster
ES= Retamo espinoso
FR= Genêt épineux
NL= Gaspeldoorn

Edibility: 1; Medical use: 1



48. Goat Willow (*Salix caprea*)

DE= Sal-Weide
ES= Sauce cabruno
FR= Saule des chèvres
NL= Boswilg

Edibility: 1; Medical use: 2



49. Grape Hyacinth (*Muscari commutatum*)

DE= Verwechselte Traubenhyazinthe
FR= Jacinthe De Raisin
NL= Blauwe druifjes

Edibility: ?; Medical use: ?



50. Grave flower (*Silene latifolia*)

DE= Weiße Lichtnelke
ES= Jabonera blanca
FR= Compagnon blanc
NL= Avondkoekoeksbloem

Edibility: ?; Medical use: ?





51. Great Hairy Willow Herb (*Epilobium hirsutum*)

DE= Zottiges Weidenröschen
ES= Adelfa
FR= Épilobe à grandes fleurs
NL= Harig wilgenroosje

Edibility: 2; Medical use: 1



52. Great Mullein (*Verbascum thapsus*)

DE= Kleinblütige Königskerze
ES= Candela regia
FR= Molène Bouillon-blanc
NL= Koningskaars

Edibility: 1; Medical use: 3



53. Green Alkanet (*Pentaglottis sempervirens*)

DE= Grüne Ochsenzunge
ES= Lengua de buey
FR= Buglosse toujours verte
NL= Overblijvende ossentong

Edibility: 1; Medical use: 0



54. Grey Field Speedwell (*Veronica polita*)

DE= Glänzende Ehrenpreis
ES= Verónica de campo
FR= Véronique brillante
NL= Gladde ereprijs

Edibility: 2; Medical use: 1



55. Hedge Bindweed (*Calystegia sepium*)

DE= Echte Zaunwinde
ES= Correhuela mayor
FR= Liseron des haies
NL= Haagwinde

Edibility: 2; Medical use: 1





56. Hemp Agrimony (*Eupatorium cannabinum*)

DE= Gewöhnlicher Wasserdost
ES= Cañamazo
FR= Eupatoire à feuilles de chanvre
NL= Koninginnekruid

Edibility: 0; Medical use: 3



57. Herb Robert (*Germanium robertianum*)

DE= Ruprechtskraut
ES= Herba Geranii Robertiani
FR= Herbe à Robert
NL= Robertskruid

Edibility: 0; Medical use: 2



58. Hogweed (*Heracleum sphondylium*)

DE= Wiesen-Bärenklau
ES= Branca ursina
FR= Berce sphondyle
NL= Berenklauw

Edibility: 3; Medical use: 2



59. Hogweed (*Heracleum austriacum*)

DE= Österreichische Bärenklau
FR= Berce
NL= Berenklauw

Edibility: ?; Medical use: ?



60. Hollyhock (*Alcea rosea*)

DE= Gewöhnliche Stockrose
ES= Malva real
FR= Rose papale
NL= Stokroos

Edibility: 3; Medical use: 2





61. Holy Bramble (*Rubus ulmifolius sanctus*)

FR= Rubus sanctus

Edibility: 2; Medical use: 0



62. Honesty (*Luminaria annua*)

DE= Einjähriges Silberblatt

ES= Monedas del Papa

FR= Monnaie-du-pape

NL= Tuinjudaspenning

Edibility: 2; Medical use: 0



63. Honeysuckle (*Lonicera periclymenum*)

DE= Heckenkirschen

ES= Lonicera

FR= Chèvrefeuille

NL= Kamperfoelie

Edibility: 1; Medical use: 2



64. Indian Nightshade (*Solanum violaceum*)

Edibility: ?; Medical use: ?



65. Island False Bindweed (*Calystegia macrostegia*)

Edibility: ?; Medical use: ?





66. Klasea Thistle (*Klasea lycopifolia*)

Edibility: ?; Medical use: ?



67. Knapweed (*Centaurea polycantha*)

DE= Flockenblumen
FR= Centaurea
NL= Centaurie

Edibility: ?; Medical use: ?



68. Lady's Bedstraw (*Galium verum*)

DE= Echtes Labkraut
ES= Agana
FR= Caille-lait jaune
NL= Geel walstro

Edibility: 3; Medical use: 2



69. Large Yellow Loosestrife (*Lysimachia punctata*)

DE= Punktierter Gilbweiderich
FR= Lysimaque ponctuée
NL= Puntwederik

Edibility: ?; Medical use: ?



70. Lazy daisy (*Aphanostephus ramosissimus*)

Edibility: ?; Medical use: ?





71. Lesser Bindweed (*Convolvulus arvensis*)

DE= Acker-Winde
ES= Altabaquillo
FR= Liseron des champs
NL= Akkerwinde

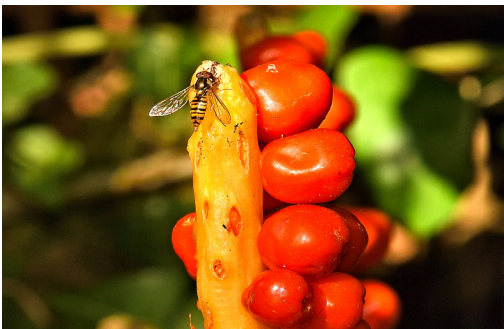
Edibility: 1; Medical use: 2



72. Lesser Knapweed (*Centaurea nigra*)

DE= Schwarze Flockenblume
FR= Centaurée noire
NL= Zwart knooppkruid

Edibility: 1; Medical use: 2



73. Lords and Ladies (*Arum cylindraceum*)

DE= Südöstlicher Aronstab

Edibility: ?; Medical use: ?



74. Love-in-a-mist (*Nigella damascena*)

DE= Jungfer im Grünen
ES= Arañuela
FR= Nigelle de Damas
NL= Juffertje-in-het-groen

Edibility: 3; Medical use: 1



75. Mallow (*Malva sylvestris*)

DE= Wilde Malve
ES= Alboeza
FR= Grande Mauve
NL= Groot kaasjeskruid

Edibility: 3; Medical use: 3





76. Mallow Of Nice (*Malva nicaeensis*)

DE= Malve von Nizza
FR= Mauve de Nice
NL= Malve Van Nice

Edibility: 3; Medical use: 1



77. Meadow Barley (*Hordeum secalinum*)

NL= Veldgerst

Edibility: ?; Medical use: ?



78. Meadow Buttercup (*Ranunculus acris*)

DE= Scharfer Hahnenfuß
ES= Botón de oro
FR= Bouton d'or
NL= Scherpe boterbloem

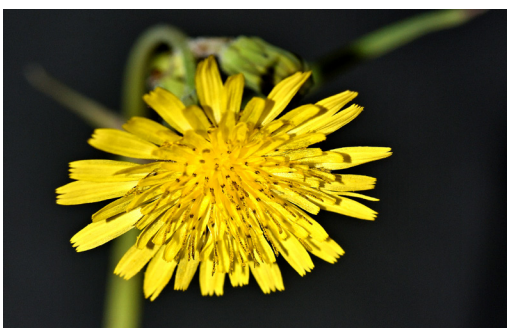
Edibility: 1; Medical use: 2



79. Michaelmaes Daisy (*Aster amellus*)

DE= Berg-Aster
ES= Estrellada
FR= Marguerite de la Saint-Michel
NL= Bergaster

Edibility: ?; Medical use: ?



80. Milk Thistle (*Sonchus oleraceus*)

DE= Gemüse-Gänsedistel
ES= Cerraja
FR= Laiteron maraîcher
NL= Gewone melkdistel

Edibility: 2; Medical use: 2





81. Montpellier Cistus (*Cistus montspeliensis*)

DE= Montpellier-Zistrose
ES= Jaguarzo negro
FR= Ciste de Montpellier

Edibility: ?; Medical use: ?



82. Mountain Ash (*Sorbus americana*)

FR= Sorbier d'Amérique

Edibility: 1; Medical use: 2



83. Musk Thistle (*Carduus nutans*)

DE= Nickende Distel
FR= Chardon penché
NL= Knikkende distel

Edibility: 2; Medical use: 2



84. Narrow Leaved Valerian (*Centranthus lecoqii*)

DE= Spornblume
FR= Centranthe à feuilles étroites
NL= Spoorbloem

Edibility: ?; Medical use: ?



85. Nippelwort (*Lapsana communis*)

DE= Gemeiner Rainkohl
ES= Hierba de las mamas
FR= Lampsane commune
NL= Akkerkool

Edibility: 2; Medical use: 0





86. Old Man's Beard (*Clematis vitalba*)

DE= Gewöhnliche Waldrebe
ES= Barba de Dios
FR= Clématite des haies
NL= Bosrank

Edibility: 1; Medical use: 2



87. Oregano (*Origanum vulgare*)

DE= Oregano
ES= Orégano
FR= Origan
NL= Wilde marjolein

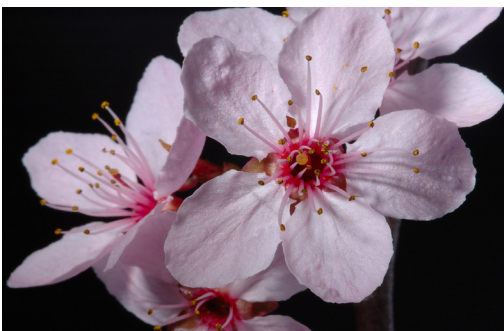
Edibility: 4; Medical use: 3



88. Ox-eye Daisy (*Leucanthemum vulgare*)

DE= Magerwiesen-Margerite
ES= Margarita
FR= Marguerite commune
NL= Gewone margriet

Edibility: 2; Medical use: 2



89. Peach (*Prunus persica*)

DE= Pfirsich
ES= Melocotonero
FR= Pêcher
NL= Perzik

Edibility: 4; Medical use: 3



90. Pennsylvania Blackberry (*Rubus pensilvanicus*)

DE= Brombeer
FR= Ronce
NL= Braam

Edibility: 2; Medical use: 0





91. Periwinkle (*Vinca major*)

DE= Großes Immergrün
ES= Hierba doncella
FR= Grande pervenche
NL= Grote maagdenpalm

Edibility: 0; Medical use: 3



92. Pincushion Flower (*Scabiosa canescens*)

DE= Tauben-Grindkraut
ES= Scabiosa
FR= Scabieuse
NL= Duifkruid

Edibility: ?; Medical use: ?



93. Plains Lazy Daisy (*Aphanostephus ramosissimus*)

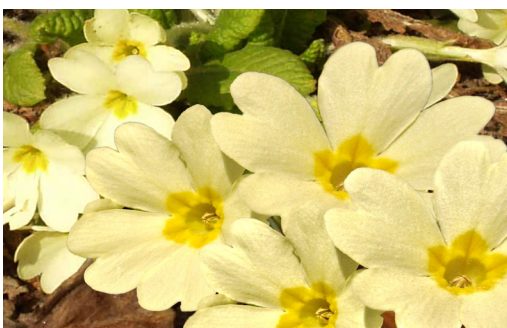
Edibility: ?; Medical use: ?



94. Prickly Sowthistle (*Sonchus asper*)

DE= Raue Gänse Distel
ES= Cerraja
FR= Laiteron piquant
NL= Gekroesde melkdistel

Edibility: 2; Medical use: 1



95. Primrose (*Primula vulgaris*)

DE= Stängellose Schlüsselblume
ES= Flor de San José
FR= Primevère sans tige
NL= Stengelloze sleutelbloem

Edibility: 3; Medical use: 3





96. Proso Millet (*Panicum miliaceum*)

DE= Rispenhirse
ES= Mijo común
FR= Millet blanc
NL= Gierst

Edibility: 3; Medical use: 2



97. Purple Dead-nettle (*Lamium purpureum*)

DE= Lila Taubnessel
ES= Lamio púrpura
FR= Lamier pourpre
NL= Paarse dovenetel

Edibility: 2; Medical use: 1



98. Purple Loosestrife (*Lythrum salicaria*)

DE= Blutweiderich
ES= Arroyuela
FR= Salicaire commune
NL= Kattenstaart

Edibility: 2; Medical use: 3



99. Purple Toadflax (*Linaria purpurea*)

DE= Waltroll Löwenmaul
FR= Muflier de Waltroll
NL= Walstroleeuwenbek

Edibility: ?; Medical use: ?



100. Pyramidal Orchid (*Anacamptis pyramidalis*)

DE= Pyramiden-Hundswurz
ES= Orquídea piramidal
FR= Orchis pyramidal
NL= Hondskruid

Edibility: 2; Medical use: 1





101. Rape (*Brassica napus*)

DE= Raps
ES= Canola
FR= Colza
NL= Koolzaad

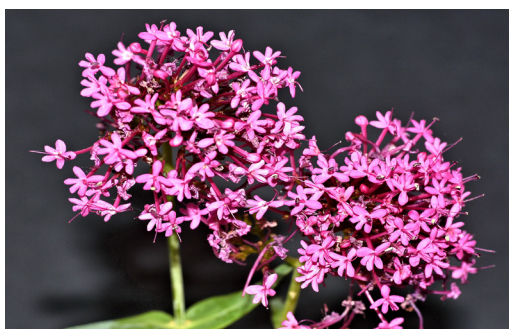
Edibility: 3; Medical use: 2



102. Red Poppy (*Papaver rhoeas*)

DE= Klatschmohn
ES= Ababa
FR= Coquelicot
NL= Grote klaproos

Edibility: 2; Medical use: 3



103. Red Valerian (*Centranthus ruber*)

DE= Rote Spornblume
ES= Centrantero
FR= Centranthe rouge
NL= Spoorbloem

Edibility: 2; Medical use: 1



104. Reed (*Phragmites australis*)

DE= Schilfrohr
ES= Carrizo
FR= Roseau commun
NL= Riet

Edibility: 5; Medical use: 2



105. Restharrow (*Ononis repens*)

DE= Dornige Hauhechel
ES= Asnillo
FR= Bugrane épineuse
NL= Kattendoorn

Edibility: 2; Medical use: 1





106. Ribwort Plantain (*Plantago lanceolata*)

DE= Spitzwegerich
ES= Llantén menor
FR= Plantain lancéolé
NL= Smalle weegbree

Edibility: 2; Medical use: 3



107. Roadside Agrimony (*Agrimonia striata*)

ES= Agrimonia
FR= Aigremoine rainurée

Edibility: 0; Medical use: 2



108. Roundhead Prairie Clover (*Dalea multiflora*)

Edibility: ?; Medical use: ?



109. Round-headed Water Dropwort (*Oenanthe globulosa*)

ES= Golondrinillas

Edibility: ?; Medical use: ?



110. Rowan (*Sorbus aucuparia*)

DE= Vogelbeere
ES= Serbal de los cazadores
FR= Sorbier des oiseaux
NL= Wilde lijsterbes

Edibility: 2; Medical use: 2

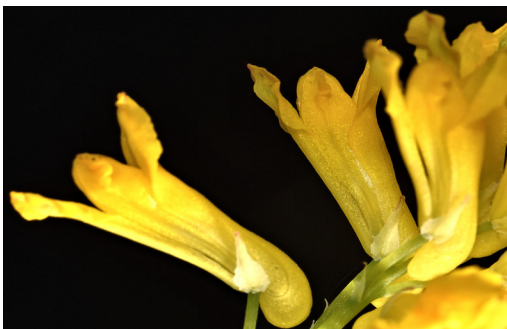




111. Scabious (*Scabiosa canescens*)

DE= Skabiosen
ES= Flores del acerico
FR= Scabieuse
NL= Scabiosa

Edibility: ?; Medical use: ?



112. Scrambled Eggs (*Corydalis aurea*)

FR= Corydale dorée

Edibility: 0; Medical use: 2



113. Sea Kale (*Crambe maritima*)

DE= Meerkohl
ES= Col marina
FR= Chourbe
NL= Zeekool

Edibility: 4; Medical use: 0



114. Sea Lavender (*Limonium ramosissimum*)

DE= Strandflieder
ES= Limonium
FR= Limonium

Edibility: ?; Medical use: ?



115. Seaside Agoseris (*Agoseris aspargioides*)

Edibility: ?; Medical use: ?





116. Self-heal (*Prunella vulgaris*)

DE= Kleine Braunelle
ES= Consuelda menor
FR= Brunelle commune
NL= Gewone brunella

Edibility: 2; Medical use: 3



117. Silver Ragwort (*Jacobaea maritima*)

DE= Weißfilziges Greiskraut
ES= Cineraria
FR= Sénéçon cinéraire
NL= Zilverkruiskruid

Edibility: ?; Medical use: ?



118. Sloe (*Prunus spinosa*)

DE= Schlehdorn
ES= Endrino
FR= Épine noire
NL= Sleedoorn

Edibility: 3; Medical use: 2



119. Spanish Broom (*Spartium junceum*)

DE= Pfriemenginster
ES= Canarios
FR= Spartier
NL= Bezemstruik

Edibility: ?; Medical use: ?



120. Spear Thistle (*Cirsium vulgare*)

DE= Gewöhnliche Kratzdistel
ES= Cardencha
FR= Cirse commun
NL= Speerdistel

Edibility: 2; Medical use: 1

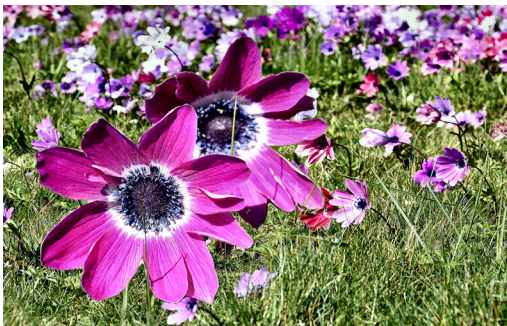




121. Sunflower (*Helianthus annuus*)

DE= Sonnenblume
ES= Girasol
FR= Tournesol
NL= Zonnebloem

Edibility: 5; Medical use: 2



122. Syrian Anemone (*Anemone coronaria*)

DE= Kronen-Anemone
ES= Anemona
FR= Anémone couronnée
NL= Kroon anemone

Edibility: ?; Medical use: ?



123. Tall Fleabane (*Erigeron sumatrensis*)

FR= Vergerette blanchâtre
NL= Hoge fijnstraal

Edibility: ?; Medical use: ?



124. Teasel (*Dipsacus fullonum*)

DE= Wilde Karde
ES= Cardencha
FR= Cardère sauvage
NL= Grote kaardebol

Edibility: 0; Medical use: 2



125. Twiggy Turnip (*Brassica fruticulosa*)

Edibility: ?; Medical use: ?





126. Tyrol Knapweed (*Centaurea nigrescens*)

DE= Schwärzliche Flockenblume
FR= Centaurée noirâtre

Edibility: 1; Medical use: 2



127. Viper's Bugloss (*Echium vulgare*)

DE= Blaue Natternkopf
ES= Viperina
FR= Serpentine
NL= Slangenkruid

Edibility: 1; Medical use: 2



128. Wall Rocket (*Diplotaxis hara*)

ES= Jaramago de yesar

Edibility: ?; Medical use: ?



129. Water Forget Me Not (*Myosotis scorpioides*)

DE= Sumpf-Vergissmeinnicht
ES= Nomeolvides de agua
FR= Myosotis des marais
NL= Moerasvergeet-mij-nietje

Edibility: ?; Medical use: 1



130. Water Knotweed (*Persicaria amphibia*)

DE= Wasser-Knöterich
FR= Renouée amphibie
NL= Veenwortel

Edibility: 1; Medical use: 2





131. Water Ragwort (*Jacobaea aquatica*)

DE= Weißfilziges Greiskraut
FR= Sénéçon cinéraire
NL= Zilverkruiskruid

Edibility: ?; Medical use: ?



132. White Clover (*Trifolium repens*)

DE= Weißklee
ES= Trébol blanco
FR= Trèfle blanc
NL= Witte klaver

Edibility: 3; Medical use: 2



133. White Valerian (*Centranthus ruber albus*)

DE= Weiße Spornblume
ES= Barba de Júpiter
FR= Centranthe blanc
NL= Witte spoorbloem

Edibility: 2; Medical use: 1



134. Wild Carrot (*Daucus carota*)

DE= Möhre
ES= Zanahoria
FR= Carotte sauvage
NL= Wilde peen

Edibility: 2; Medical use: 3



135. Willowherb (*Epilobium augustifolium*)

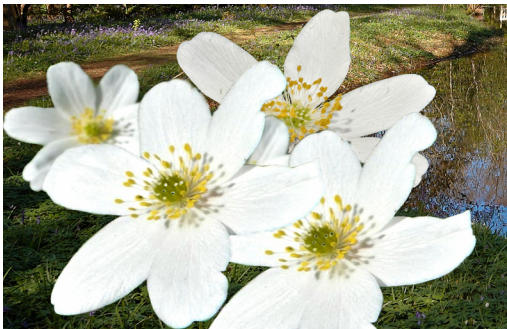
Edibility: 3; Medical use: 2





136. Windflower (*Anemone multifida rubra*)

Edibility: ?; Medical use: ?



137. Wood Anemone (*Anemoides nemorosa*)

DE= Buschwindröschen
ES= Anémona de bosque
FR= Anémone des bois
NL= Bosanemoon

Edibility: 0; Medical use: 1



138. Woolly Ragwort (*Packera tomentosa*)

DE= Wolliges Kreuzkraut
FR= Sénéçon laineux
NL= Wollig kruiskruid

Edibility: ?; Medical use: ?



139. Yellow Toadflax (*Linaria vulgaris*)

DE= Leinkraut
ES= Becerra
FR= Linaire commune
NL= Vlasbekje

Edibility: 1; Medical use: 2



Latin Name Index

Latin name	Common name	Non-English names
<i>Achillea setacea</i>	Bristly Yarrow	DE= Schafgarben; ES= Perejil bravío; FR= Achillée; NL= Duizendblad
<i>Agoseris aspargioides</i>	Seaside Agoseris	
<i>Agrimonia striata</i>	Roadside Agrimony	ES= Agrimonia; FR= Aigremoine rainurée;
<i>Alcea rosea</i>	Hollyhock	DE= Gewöhnliche Stockrose; ES= Malva real; FR= Rose papale; NL= Stokroos
<i>Anacamptis pyramidalis</i>	Pyramidal Orchid	DE= Pyramiden-Hundswurz; ES= Orquídea piramidal; FR= Orchis pyramidal; NL= Hondskruid
<i>Anemoides nemorosa</i>	Wood Anemone	DE= Buschwindröschen; ES= Anémone de bosque; FR= Anémone des bois; NL= Bosanemoon
<i>Anemone coronaria</i>	Syrian Anemone	DE= Kronen-Anemone; ES= Anemona; FR= Anémone couronnée; NL= Kroon anemone
<i>Anemone multifida rubra</i>	Windflower	
<i>Aphanostephus ramosissimus</i>	Lazy daisy	
<i>Aphanostephus ramosissimus</i>	Plains Lazy Daisy	
<i>Arum cylindraceum</i>	Lords and Ladies	DE= Südöstlicher Aronstab;
<i>Aster amellus</i>	Michaelmaes Daisy	DE= Berg-Aster; ES= Estrellada; FR= Marguerite de la Saint-Michel; NL= Bergaster
<i>Atropa belladonna</i>	Deadly Nightshade	DE= Schwarze Tollkirsche; ES= Belladonna; FR= Belladone; NL= Wolfskers
<i>Ballota nigra</i>	Black Horehound	DE= Schwarznessel; ES= Marrubio fétido; FR= Ballote noire; NL= Echte ballote
<i>Bellis perennis</i>	Daisy	DE= Gänseblümchen; ES= Margarita; FR= Pâquerette; NL= Madeliefje
<i>Brassica fruticulosa</i>	Twiggy Turnip	
<i>Brassica napus</i>	Rape	DE= Raps; ES= Canola; FR= Colza; NL= Koolzaad
<i>Bryonia cretica</i>	Cretan Bryony	
<i>Buddleja davidii</i>	Butterfly Bush	DE= Schmetterlingsflieder; ES= Arbusto de las mariposas; FR= Arbre aux papillons; NL= Vlinderstruik
<i>Calendula arvensis</i>	Field Marigold	DE= Acker-Ringelblume; ES= Caléndula de los campos; FR= Souci des champs; NL= Akkergoudsbloem
<i>Calystegia macrostegia</i>	Island False Bindweed	
<i>Calystegia sepium</i>	Hedge Bindweed	DE= Echte Zaunwinde; ES= Correhuela mayor; FR= Liseron des haies; NL= Haagwinde
<i>Campanula garganica</i>	Adriatic Bellflower	FR= Campanule étoilée; NL= Campanula garganica
<i>Carduus nutans</i>	Musk Thistle	DE= Nickende Distel; FR= Chardon penché; NL= Knikkende distel
<i>Centaurea nigra</i>	Lesser Knapweed	DE= Schwarze Flockenblume; FR= Centaurée noire; NL= Zwart knoopkruid
<i>Centaurea nigrescens</i>	Tyrol Knapweed	DE= Schwärzliche Flockenblume; FR= Centaurée noirâtre;
<i>Centaurea polyantha</i>	Knapweed	DE= Flockenblumen; FR= Centaurea; NL= Centaurie
<i>Centranthus lecoqii</i>	Narrow Leaved Valerian	DE= Spornblume; FR= Centranthe à feuilles étroites; NL= Spoorbloem
<i>Centranthus ruber</i>	Red Valerian	DE= Rote Spornblume; ES= Centranto; FR= Centranthe rouge; NL= Spoorbloem
<i>Centranthus ruber albus</i>	White Valerian	DE= Weiße Spornblume; ES= Barba de Júpiter; FR= Centranthe blanc; NL= Witte spoorbloem

<i>Cichorium pumilum</i>	Chicory	DE= Chicoree; ES= Achicoria; FR= Chicorée; NL= Cichorei
<i>Cirsium arvense</i>	Field Thistle	DE= Acker-Kratzdistel; ES= Cardo cundidor; FR= Chardon des champs; NL= Akkerdistel
<i>Cirsium edule</i>	Edible Thistle	DE= Essbare Distel; ES= Cardo comestible; FR= Chardon comestible; NL= Eetbare distel
<i>Cirsium vulgare</i>	Spear Thistle	DE= Gewöhnliche Kratzdistel; ES= Cardencha; FR= Cirse commun; NL= Speerdistel
<i>Cistus montspeliensis</i>	Montpellier Cistus	DE= Montpellier-Zistrose; ES= Jaguarzo negro; FR= Ciste de Montpellier;
<i>Clematis vitalba</i>	Old Man's Beard	DE= Gewöhnliche Waldrebe; ES= Barba de Dios; FR= Clématite des haies; NL= Bosrank
<i>Convolvulus arvensis</i>	Lesser Bindweed	DE= Acker-Winde; ES= Altabaquillo; FR= Liseron des champs; NL= Akkerwinde
<i>Corydalis aurea</i>	Scrambled Eggs	FR= Corydale dorée;
<i>Crambe maritima</i>	Sea Kale	DE= Meerkohl; ES= Col marina; FR= Chourbe; NL= Zeekool
<i>Cyclamen hederifolium</i>	Cyclamen	DE= Efeublättriges Alpenveilchen; ES= Ciclamen; FR= Cyclamen de Naples; NL= Napolitaanse cycloam
<i>Dactylis glomerata</i>	Cocksfoot	DE= Gewöhnliches Knäuelgras; ES= Avallico; FR= Dactyle pelotonné; NL= Kroppaar
<i>Dalea multiflora</i>	Roundhead Prairie Clover	
<i>Daucus carota</i>	Wild Carrot	DE= Möhre; ES= Zanahoria; FR= Carotte sauvage; NL= Wilde peen
<i>Daucus muricatus</i>	Daucus	
<i>Digitalis purpurea</i>	Foxglove	DE= Fingerhüte; ES= Dedaleras; FR= Digitale; NL= Vingerhoedskruid
<i>Diplotaxis hara</i>	Wall Rocket	ES= Jaramago de yesar;
<i>Dipsacus fullonum</i>	Teasel	DE= Wilde Karde; ES= Cardencha; FR= Cardère sauvage; NL= Grote kaardebol
<i>Echium vulgare</i>	Viper's Bugloss	DE= Blaue Natternkopf; ES= Viperina; FR= Serpentine; NL= Slangenkruid
<i>Epilobium augustifolium</i>	Willowherb	
<i>Epilobium hirsutum</i>	Great Hairy Willow Herb	DE= Zottiges Weidenröschen; ES= Adelfa; FR= Épilobe à grandes fleurs; NL= Harig wilgenroosje
<i>Erigeron sumatrensis</i>	Tall Fleabane	FR= Vergerette blanchâtre; NL= Hoge fijnstraal
<i>Eschscholzia californica</i>	California Poppy	DE= Kalifornischer Mohn; ES= Amapola de California; FR= Pavot de Californie; NL= Slaapmutsje
<i>Eupatorium cannabinum</i>	Hemp Agrimony	DE= Gewöhnlicher Wasserdost; ES= Cañamazo; FR= Eupatoire à feuilles de chanvre; NL= Koninginnekruid
<i>Fagopyrum esculentum</i>	Buckwheat	DE= Echter Buchweizen; ES= Alforjón; FR= Sarrasin; NL= Boekweit
<i>Galium verum</i>	Lady's Bedstraw	DE= Echtes Labkraut; ES= Agana; FR= Caille-lait jaune; NL= Geel walstro
<i>Germanium robertianum</i>	Herb Robert	DE= Ruprechtskraut; ES= Herba Geranii Robertiani; FR= Herbe à Robert; NL= Robertskruid
<i>Helianthus annuus</i>	Sunflower	DE= Sonnenblume; ES= Girasol; FR= Tournesol; NL= Zonnebloem
<i>Helminthotheca echioides</i>	Bristly Oxtongue	DE= Natternkopf-Wummlattich; FR= Picride fausse vipérine; NL= Dubbelkelk
<i>Heracleum austriacum</i>	Hogweed	DE= Österreichische Bärenklau; FR= Berce; NL= Berenklauw
<i>Heracleum lanatum</i>	Cow Parsnip	DE= Kuh Pastinaken; ES= Pastinaca de vaca; FR= Berce laineuse; NL= Koe pastinaak
<i>Heracleum sphondylium</i>	Hogweed	DE= Wiesen-Bärenklau; ES= Branca ursina; FR= Berce sphondyle; NL= Berenklauw
<i>Hieracium megacephalum</i>	Coastal Plain Hawkweed	DE= Habichtskräuter; FR= Hieracium; NL= Havikskruid

<i>Holcus mollis</i>	Creeping Velvet Grass	DE= Weiches Honiggras; FR= Houlque molle; NL= Gladde witbol
<i>Hordeum secalinum</i>	Meadow Barley	NL= Veldgerst
<i>Hyacinthoides nonscripta</i>	Bluebell	DE= Glockenblume; ES= Jacinto de los bosques; FR= Jacinthe des bois; NL= Klokje
<i>Hypochaeris radicata</i>	Cat's Ears	DE= Gewöhnliches Ferkelkraut; ES= Hierba del chancho; FR= Porcelle enracinée; NL= Gewoon biggenkruid
<i>Jacobaea aquatica</i>	Water Ragwort	DE= Weißfilziges Greiskraut; FR= Sénéçon cinéraire; NL= Zilverkruid
<i>Jacobaea maritima</i>	Silver Ragwort	DE= Weißfilziges Greiskraut; ES= Cineraria; FR= Sénéçon cinéraire; NL= Zilverkruid
<i>Jacobaea vulgaris</i>	Common Ragwort	DE= Jakobs-Greiskraut; ES= Hierba de Santiago; FR= Sénéçon de Jacob; NL= Jakobskruid
<i>Klasea lycopifolia</i>	Klasea Thistle	
<i>Koeleria macrantha</i>	Crested Hair Grass	DE= Zierliches Schillergras; FR= Koélerie grêle; NL= Smal fakkelgras
<i>Lamium garganicum</i>	Giant Dead Nettle	DE= Taube Nessel; FR= Lamier pourpre;
<i>Lamium purpureum</i>	Purple Dead-nettle	DE= Lila Taubnessel; ES= Lamio púrpura; FR= Lamier pourpre; NL= Paarse dovenetel
<i>Lapsana communis</i>	Nippelwort	DE= Gemeiner Rainkohl; ES= Hierba de las mamas; FR= Lampsane commune; NL= Akkerkool
<i>Lathyrus latifolius</i>	Everlasting Pea	DE= Breitblättrige Platterbse; ES= Albejana basta; FR= Pois vivace; NL= Brede lathyrus
<i>Leucanthemum vulgare</i>	Ox-eye Daisy	DE= Magerwiesen-Margerite; ES= Margarita; FR= Marguerite commune; NL= Gewone margriet
<i>Limonium ramosissimum</i>	Sea Lavender	DE= Strandflieder; ES= Limonium; FR= Limonium;
<i>Linaria purpurea</i>	Purple Toadflax	DE= Waltroll Löwenmaul; FR= Mufler de Waltroll; NL= Walstroleeuwenbek
<i>Linaria vulgaris</i>	Yellow Toadflax	DE= Leinkraut; ES= Becerra; FR= Linaire commune; NL= Vlasbekje
<i>Lonicera periclymenum</i>	Honeysuckle	DE= Heckenkirschen; ES= Lonicera; FR= Chèvrefeuille; NL= Kamperfoelie
<i>Lotus corniculatus</i>	Birdsfoot Trefoil	DE= Hornklee; ES= Loto corniculado; FR= Lotier corniculé; NL= Vlinderbloem
<i>Luminaria annua</i>	Honesty	DE= Einjähriges Silberblatt; ES= Monedas del Papa; FR= Monnaie-du-pape; NL= Tuinjudaspenning
<i>Lysimachia punctata</i>	Large Yellow Loosestrife	DE= Punktierter Gilbweiderich; FR= Lysimaque ponctuée; NL= Puntwederik
<i>Lythrum salicaria</i>	Purple Loosestrife	DE= Blutweiderich; ES= Arroyuela; FR= Salicaire commune; NL= Kattenstaart
<i>Malus domestica</i>	Apple	DE= Apfel; ES= Manzano; FR= Pomme; NL= Appel
<i>Malva nicaeensis</i>	Mallow Of Nice	DE= Malve von Nizza; FR= Mauve de Nice; NL= Malve Van Nice
<i>Malva sylvestris</i>	Mallow	DE= Wilde Malve; ES= Alboeza; FR= Grande Mauve; NL= Groot kaasjeskruid
<i>Muscari commutatum</i>	Grape Hyacinth	DE= Verwechselte Traubenhyaazinthe; FR= Jacinthe De Raisin; NL= Blaue druifjes
<i>Myosotis arvensis</i>	Forget Me Not	
<i>Myosotis scorpioides</i>	Water Forget Me Not	DE= Sumpf-Vergissmeinnicht; ES= Nomeolvides de agua; FR= Myosotis des marais; NL= Moerasvergeet-mij-nietje
<i>Myosotis welwitschii</i>	Forget Me Not	DE= Acker-Vergissmeinnicht; FR= Myosotis des champs ; NL= Akkervergeet-mij-nietje
<i>Narcissus pseudonarcissus</i>	Daffodil	DE= Gelbe Narzisse; ES= Azucena silvestre; FR= Narcisse jaune; NL= Wilde narcis

<i>Nigella damascena</i>	Love-in-a-mist	DE= Jungfer im Grünen; ES= Arafuella; FR= Nigelle de Damas; NL= Juffertje-in-het-groen
<i>Oenanthe globulosa</i>	Round-headed Water Dropwort	ES= Golondrinillas;
<i>Oenothera glazioviana</i>	Evening Primrose	DE= Rotkelchige Nachtkerze; FR= Onagre de Glaziou; NL= Grote teunisbloem
<i>Ononis repens</i>	Restharrow	DE= Dornige Hauhechel; ES= Asnillo; FR= Bugrane épineuse; NL= Kattendoorn
<i>Ophrys apifera</i>	Bee Orchid	DE= Bienen-Ragwurz; ES= Abeja; FR= Ophrys abeille; NL= Bijenorchis
<i>Origanum vulgare</i>	Oregano	DE= Oregano; ES= Orégano; FR= Origan; NL= Wilde marjolein
<i>Oxalis corniculata</i>	Creeping Woodsorrel	DE= Horn-Sauerklee; ES= Acedera; FR= Oxalis corniculé; NL= Gehoornde klaverzuring
<i>Packera tomentosa</i>	Woolly Ragwort	DE= Wolliges Kreuzkraut; FR= Sénéçon laineux; NL= Wollig kruiskruid
<i>Panicum miliaceum</i>	Proso Millet	DE= Rispenhirse; ES= Mijo común; FR= Millet blanc; NL= Gierst
<i>Papaver rhoeas</i>	Red Poppy	DE= Klatschmohn; ES= Ababa; FR= Coquelicot; NL= Grote klaproos
<i>Pentaglottis sempervirens</i>	Green Alkanet	DE= Grüne Ochsenzunge; ES= Lengua de buey; FR= Buglosse toujours verte; NL= Overblijvende ossentong
<i>Persicaria amphibia</i>	Water Knotweed	DE= Wasser-Knöterich; FR= Renouée amphibie; NL= Veenwortel
<i>Phragmites australis</i>	Reed	DE= Schilfrohr; ES= Carrizo; FR= Roseau commun; NL= Riet
<i>Plantago lanceolata</i>	Ribwort Plantain	DE= Spitzwegerich; ES= Llantén menor; FR= Plantain lancéolé; NL= Smalle weegbree
<i>Primula vulgaris</i>	Primrose	DE= Stängellose Schlüsselblume; ES= Flor de San José; FR= Primevère sans tige; NL= Stengelloze sleutelbloem
<i>Prunella vulgaris</i>	Self-heal	DE= Kleine Braunelle; ES= Consuelda menor; FR= Brunelle commune; NL= Gewone brunella
<i>Prunus persica</i>	Peach	DE= Pfirsich; ES= Melocotonero; FR= Pêcher; NL= Perzik
<i>Prunus spinosa</i>	Sloe	DE= Schlehdorn; ES= Endrino; FR= Épine noire; NL= Sleedoorn
<i>Pulicaria dysenterica</i>	Fleabane	DE= Großes Flohkraut; ES= Hierba de gato; FR= Pulicaire dysentérique; NL= Heelblaadjes
<i>Ranunculus acris</i>	Meadow Buttercup	DE= Scharfer Hahnenfuß; ES= Botón de oro; FR= Bouton d'or; NL= Scherpe boterbloem
<i>Ranunculus eschscholtzii</i>	Eschscholtz's Buttercup	
<i>Rosa canina</i>	Dog Rose	DE= Hundsrose; ES= Rosa canina; FR= Rosier des chiens; NL= Hondstroos
<i>Rubus canescens</i>	Bramble	DE= Filz-Brombeere; ES= Zarza; FR= Ronce tomenteuse; NL= Braam
<i>Rubus pensilvanicus</i>	Pennsylvania Blackberry	DE= Brombeer; FR= Ronce; NL= Braam
<i>Rubus ulmifolius sanctus</i>	Holy Bramble	FR= Rubus sanctus;
<i>Rumex dentatus</i>	Aegean Dock	DE= Ampfer; FR= Oseille; NL= Zuring
<i>Salix caprea</i>	Goat Willow	DE= Sal-Weide; ES= Sauce cabruno; FR= Saule des chèvres; NL= Boswilg
<i>Sambucus nigra</i>	Elder	DE= Schwarzer Holunder; ES= Saúco negro; FR= Sureau noir; NL= Gewone vlier
<i>Scabiosa canescens</i>	Scabious	DE= Skabiosen; ES= Flores del acerico; FR= Scabieuse; NL= Scabiosa
<i>Scabiosa canescens</i>	Pincushion Flower	DE= Tauben-Grindkraut; ES= Scabiosa; FR= Scabieuse; NL= Duifkruid

<i>Silene latifolia</i>	Grave flower	DE= Weiße Lichtnelke; ES= Jabonera blanca; FR= Compagnon blanc; NL= Avondkoekoeksbloem
<i>Sinapis arvensis</i>	Field Mustard	DE= Acker-Senf; ES= Mostaza de campo; FR= Moutarde des champs; NL= Herik
<i>Solanum violaceum</i>	Indian Nightshade	
<i>Sonchus asper</i>	Prickly Sowthistle	DE= Raue Gänsedistel; ES= Cerraja; FR= Laiteron piquant; NL= Gekroesde melkdistel
<i>Sonchus oleraceus</i>	Milk Thistle	DE= Gemüse-Gänsedistel; ES= Cerraja; FR= Laiteron maraîcher; NL= Gewone melkdistel
<i>Sorbus americana</i>	Mountain Ash	FR= Sorbier d'Amérique;
<i>Sorbus aucuparia</i>	Rowan	DE= Vogelbeere; ES= Serbal de los cazadores; FR= Sorbier des oiseaux; NL= Wilde lijsterbes
<i>Spartium junceum</i>	Spanish Broom	DE= Pfriemenginster; ES= Canarias; FR= Spartier; NL= Bezemstruik
<i>Spiranthes spiralis</i>	Autumn Lady's Tresses	DE= Herbst-Drehwurz; FR= Spiranthe d'automne; NL= Herfstschroeforchis
<i>Succisa pratensis</i>	Devil's bit	DE= Teufelsabbiss; ES= Bocado del diablo; FR= Mors-du-Diable; NL= Blauwe knoop
<i>Taraxacum officinale</i>	Dandelion	DE= Löwenzahn; ES= Diente de león; FR= Dent-de-lion; NL= Paardenbloem
<i>Trifolium repens</i>	White Clover	DE= Weißklee; ES= Trébol blanco; FR= Trèfle blanc; NL= Witte klaver
<i>Trifolium wormskieldii</i>	Cow Clover	DE= Klee; FR= Trèfle; NL= Klaver
<i>Ulex europaeus</i>	Goarse	DE= Stechginster; ES= Retamo espinoso; FR= Genêt épineux; NL= Gaspeldoorn
<i>Verbascum thapsus</i>	Great Mullein	DE= Kleinblütige Königskerze; ES= Candela regia; FR= Molène Bouillon-blanc; NL= Koningskaars
<i>Veronica polita</i>	Grey Field Speedwell	DE= Glänzende Ehrenpreis; ES= Verónica de campo; FR= Véronique brillante; NL= Gladde ereprijs
<i>Vinca major</i>	Periwinkle	DE= Großes Immergrün; ES= Hierba doncella; FR= Grande pervenche; NL= Grote maagdenpalm

Conclusion

It is heartening to find so many pretty or interesting flowers available for all with eyes with which to see. I am sure other seasons would reveal more species and the concept could be widened to include leaves, nuts, fruits and berries. Moreover, all this with no need at all for artificially 're-wilded' areas in or around the village.

Addendum: Technical note

Almost all my photographs were taken with a Nikon D750 camera and Sigma 105mm macro lens. Very often I use two flashguns: one on camera and the other remote.

Most of the images employed a modicum of flash. Image files from the camera were processed using Nikon NX-D and Corel Paintshop Pro software. I wrote the underlying database software myself in Microsoft Visual Basic to drive MS-Word.

Word document files were converted to PDF format using Adobe Acrobat Pro. The PDF files preferably should be opened on a proper PC. They will also work on an Android tablet and even an Android mobile telephone – although have not been specifically designed for such small devices. I have no Apple Mac kit and so can't comment on use in that environment.



[Return to table of contents](#)